

NOCTURNE

LIVE AT BLENHEIM PALACE OXFORDSHIRE

ACCESS INFORMATION PACK

This document has been prepared to provide information to guests that require assistance to access this year's Nocturne Live concerts.

We are committed to ensuring that all visitors can enjoy Nocturne Live and we hope that this document provides relevant details about accessibility at the event. If you have further questions please email access@nocturnelive.com.

This document provides information on:

- CAR PARKING
- ENTRY AND MAP
- WHEELCHAIR AREA AND SEATING
- VISITING THE PALACE AND STATE ROOM DINING PACKAGE
- ACCESSIBLE TOILETS
- MEDICAL SERVICES
- LIGHTS AND SPECIAL EFFECTS
- GUIDE DOGS
- EVENT SPACE AND SITE

CAR PARKING

Follow Blue Badge signs for the Blue Badge Car Park.

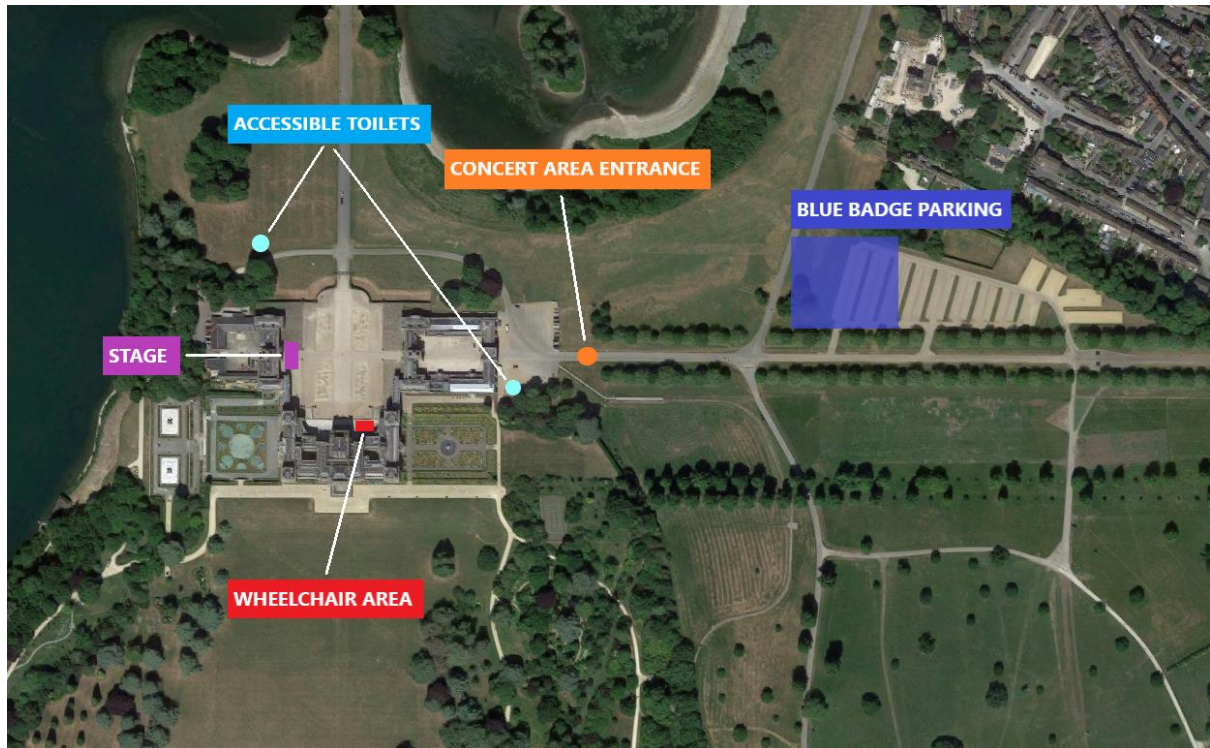
Please note, if you are a Blue Badge holder and want to park in the Blue Badge Car Park, you will need to purchase a Car Park Pass in advance. If you arrive without a Car Park Pass you will be directed to an area within the main car park where you can pay in cash.

The Blue Badge Car Park is on grass. There is a tarmac route from the car park to the Main Entrance. The route is approximately 300 metres.

The Blue Badge Car Park is reserved to Blue Badge Holders only. If you have mobility issues but don't have a Blue Badge, please talk to the stewards on arrival and they will do their best to help you park as close to concert entrance as possible with the main car park. The main car park is also on grass.

ENTRY AND MAP

There is a well-lit tarmac and gravel path to the Nocturne Concert Area entrance.



WHEELCHAIR AREA AND SEATING

All seating is reserved through allocated tickets. Stewards will be able to assist with the storage of wheelchairs if required.

There is a Wheelchair Area provided on-site, please see map below. The area is accessed via fine gravel pathways and the area is not under cover.

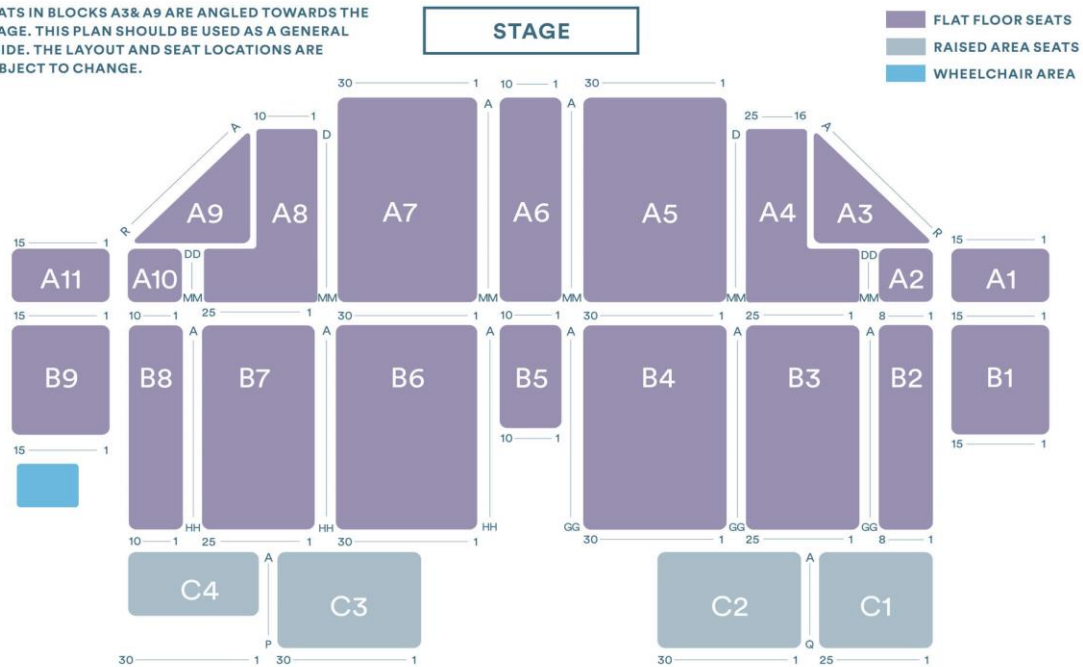
If you require access to toilets during the show, on arrival please request stewards allocate you an accessible space in the Wheelchair Area. We will try to facilitate all requests but please be aware the areas are filled on a first come first served basis. The Wheelchair Area is situated to the side of the seating arena. Access to the toilets whilst the concert is on, is possible but more difficult from this area as it requires moving through the seated arena.

As Wheelchair Area space is limited, please check in advance if you would like more than one companion to join you.

To book these tickets please select Access Tickets on the ticket page.

WELCOME TO NOCTURNE SEATING PLAN

SEATS IN BLOCKS A3& A9 ARE ANGLED TOWARDS THE STAGE. THIS PLAN SHOULD BE USED AS A GENERAL GUIDE. THE LAYOUT AND SEAT LOCATIONS ARE SUBJECT TO CHANGE.



VISITING THE PALACE AND STATE ROOM DINING PACKAGE

There are 22 wide steps to access the Palace and State Rooms. If you require wheelchair access to this separately ticketed event you will be escorted to the platform lift or temporary ramps will be available.

Manual wheelchairs, mobility scooters/electric wheelchairs (not exceeding 350kg) are able to use the platform lift, as well as guests with other mobility issues.

If you are intending to visit the Palace before the concert starts, please view the accessibility information displayed on their website:

<https://www.blenheimpalace.com/assets/files/images/operations/downloads/Access%20Statement%20Blenheim%20Palace%202016.pdf>



Palace Steps





Platform Lift



ACCESSIBLE TOILETS

Event toilets are located near the Concert Area Entrance and near the Bar and Food area closest to the stage. These are marked on the above map.

MEDICAL SERVICES

The First Aid tent will be located on the inside left of the Concert Area Entrance.

LIGHTS AND SPECIAL EFFECTS

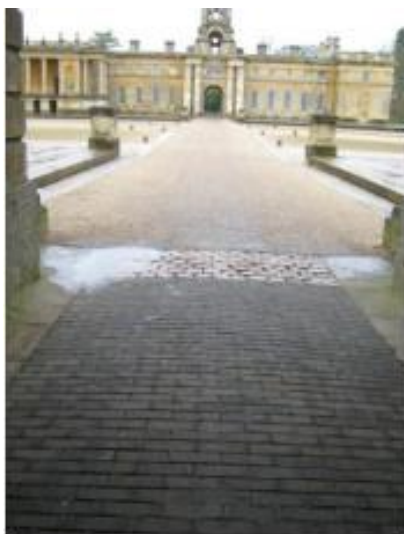
Due to the nature of the event and the type of performance there will be flashing and moving lights throughout.

GUIDE DOGS

Guide dogs are permitted on site.

EVENT SPACE AND SITE

The event is in the grounds of Blenheim Palace. Some of the gravelled areas and cobbles are uneven which can make things a little difficult, care should be taken when using a wheelchair or other mobility aid. Please ask if you require assistance.



Example of uneven surface